



EST IN SWITZERLAND 1895 - WATERPROOF

WATCH INSTRUCTIONS

AQUASPEED

Water resistance has traditionally been a characteristic of robust sports watches, such as chronographs.

Our expertise means that most ladies and gents watches, whether they be stone set, feature a delicate bracelet or an ultra slim case, can now withstand the rigours of the water-based activities detailed on the next page.

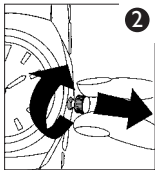
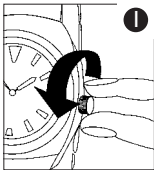
When due a battery change, we recommend you return your watch to Rotary for resealing to preserve water resistancy.

Always make sure the buttons on your watch are screwed home before exposing to water. A hard knock might cause a watch to lose its water resistance without you realising it.

Therefore, ensure your water resistant watch is serviced regularly. Water resistant watches must be opened and closed by a skilled watchmaker.

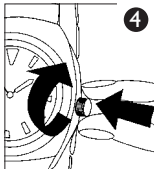
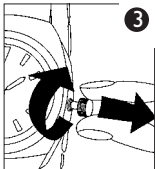
Waterproof = swimming and shallow diving (in swimming pools, lakes, rivers and coastal waters), all water sports, showering and bathing.

Directly after swimming in the sea, rinse your watch in clear, cool water.



To change the time and/or date

1. Unscrew the crown in a downward/anti clockwise direction.
2. Once the screw is released, pull the crown outward gently until it clicks once and rotate the crown in a clockwise direction to change the date. (Only applicable for Date watches)
3. To change the time pull the crown once more in an outward direction gently until it clicks and rotate the crown in a clockwise direction to change the time.



4. To close the crown, push the crown inward whilst at the same time rotating the crown in a clockwise direction. It is very important to check that the crown is fully screwed into a closed position in order to ensure water resistance is maintained.

N.B Pulling the crown forcefully in an outward direction could result in serious damage to the watch. Make sure that you always unscrew the crown before adjusting the date or time.

Instruction Manual for Rotary Aquaspeed watches

Chronograph Function: centre second hand Chronograph 1/1 sec.

Timing up to 59 minutes 59 seconds

Battery: SR927W

A) DISPLAYS AND BUTTONS

B) SETTING THE TIME

C) SETTING THE DATE

D) USING THE CHRONOGRAPH

E) CHRONOGRAPH RESET (INCL. AFTER REPLACING BATTERY)

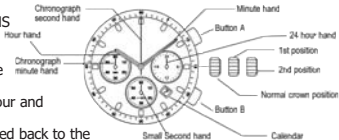
A) DISPLAYS AND BUTTONS

B) SETTING THE TIME

1. Pull the crown out to the 2nd position.

2. Turn the crown to set hour and minute hands.

3. When the crown is pushed back to the normal position, small second hand begins to run.



C) SETTING THE DATE

1. Pull the crown out to the 1st position.

2. Turn the crown counter-clockwise to set the date.

*If the date is set between the hours of around 9:00 PM and 1:00 AM, the date may not change on the following day.

3. After the date has been set, push the crown back to the normal position.

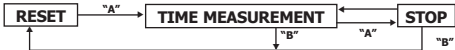
D) USING THE CHRONOGRAPH

This chronograph is able to measure and display time in 1/1 second units up to maximum of 59 minutes 59 seconds.

The chronograph second hand keeps continuously for 59 minutes 59 seconds after starting.

Measuring time with the chronograph

1. The chronograph can be started and stopped each time button "A" is pressed.
2. Pressing button "B" resets the chronograph and the chronograph second hand and chronograph minute hand return to zero position.



E) CHRONOGRAPH RESET (INCL. AFTER REPLACING BATTERY)

This procedure should be performed when the chronograph second hand does not return to zero position after the chronograph has been reset, and including after the battery has been replaced.

1. Pull the crown out to the 2nd position.
 2. Press button "A" to set the chronograph second hand to the zero position. The chronograph hand can be advanced rapidly by continuously pressing button "A".
 3. Once the hands have been zeroed, return the crown to the normal position.
- * Do not push crown to normal position while the chronograph second hand returns to zero position. It stops on the way when crown is returned to normal position and its position is recognized as zero position.



EST IN SWITZERLAND 1895 - WATERPROOF

For more information please visit
www.rotarywatches.com